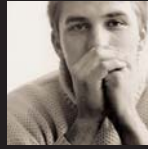




unit 3: Yarns



Name _____

Class _____ Date _____

Score _____

Instructions: You will be viewing a series of photos to gain a better understanding of yarn characteristics. Complete this worksheet while viewing the “test” photos included in each section of Unit 3. Be as descriptive as possible in your responses.

I. Filaments and Spun Yarns

The photos in this section illustrate examples of filament and spun yarns as well as variations in the tightness of yarn twists.

Yarn 1

Describe the surface of the yarn.

Based on your description, how would you classify the yarn? Is it a filament or spun yarn?

What clues did you use to determine the classification of the yarn?

Yarn 2

Describe the surface of the yarn.



unit 3: Yarns



Based on your description, how would you classify the yarn? Is it a filament or spun yarn?

What clues did you use to determine the classification of the yarn?

Yarns 3

Describe the surface of the yarns shown in the photo.

Based on your description, how would you classify the yarn? Are they filament or spun yarn?

What clues did you use to determine the classification of the yarn?

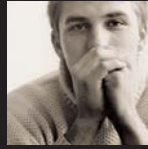
Yarns 4

Describe the surface of the yarns shown in the photo.

Based on your description, how would you classify the yarn? Are they filament or spun yarn?



unit 3: Yarns



What clues did you use to determine the classification of the yarn?

What would be at least one advantage of using a combed instead of a carded yarn?

What would be at least one advantage of using a carded instead of a combed yarn?

II. Yarn Twist

The photos in this section depict S-twist and Z-twist yarns as well as variations in the tightness of yarn twist.

Yarn Twist 1

What type of yarn twist is shown in the photo? Is it an S-twist or a Z-twist?

Yarn Twist 2

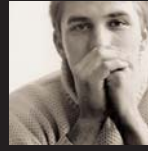
What type of yarn twist is shown in the photo? Is it an S-twist or a Z-twist?

Yarn Twist 3

What type of yarn twist is shown in the photo? Is it an S-twist or a Z-twist?



unit 3: Yarns



Yarn Twist 4

What type of yarn twist is shown in the photo? Is it an S-twist or a Z-twist?

Yarn Twist 5

What type of twist is shown in the yarn on the left? Is it an S-twist or a Z-twist?

What type of twist is shown in the yarn on the right? Is it an S-twist or a Z-twist?

Which of the two yarns appears to have the tightest twist—the one on the left or the one on the right?

Yarn Twist 6

What type of twist is shown in the yarn on the left? Is it an S-twist or a Z-twist?

What type of twist is shown in the yarn on the right? Is it an S-twist or a Z-twist?

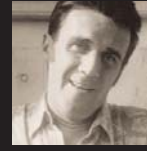
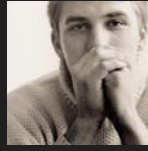
Which of the two yarns appears to have the tightest twist—the one on the left or the one on the right?

Give an example of a circumstance where a tighter twist yarn would be important.

Give an example of a circumstance where a loose twist yarn would be important.



unit 3: Yarns



III. Yarn Size and Number of Parts

The photos in this section illustrate the composition of a yarn. Photos include yarns of similar or blended fibers as well as combination yarns. Photos also illustrate single, ply and cord yarns.

Yarn Components 1

How would you classify the yarn in the photo? Is it a single, ply or cord yarn?

If the yarn is a single yarn, is it a blended yarn?

If yes, how were you able to determine that it was a blended yarn?

If the yarn is a ply or cord yarn, how many different yarns make up the finished yarn?

Is the yarn a combination yarn?

If yes, how were you able to determine that it was a combination yarn?

Yarn Components 2

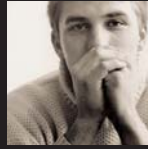
How would you classify the yarn in the photo? Is it a single, ply or cord yarn?

If the yarn is a single yarn, is it a blended yarn?

If yes, how were you able to determine that it was a blended yarn?



unit 3: Yarns



If the yarn is a ply or cord yarn, how many different yarns make up the finished yarn?

Is the yarn a combination yarn?

If yes, how were you able to determine that it was a combination yarn?

Yarn Components 3

How would you classify the yarn in the photo? Is it a single, ply or cord yarn?

If the yarn is a single yarn, is it a blended yarn?

If yes, how were you able to determine that it was a blended yarn?

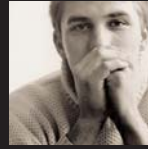
If the yarn is a ply or cord yarn, how many different yarns make up the finished yarn?

Is the yarn a combination yarn?

If yes, how were you able to determine that it was a combination yarn?



unit 3: Yarns



Yarn Components 4

How would you classify the yarn in the photo? Is it a single, ply or cord yarn?

If the yarn is a single yarn, is it a blended yarn?

If yes, how were you able to determine that it was a blended yarn?

If the yarn is a ply or cord yarn, how many different yarns make up the finished yarn?

Is the yarn a combination yarn?

If yes, how were you able to determine that it was a combination yarn?

Yarn Components 5

How would you classify the yarn in the photo? Is it a single, ply or cord yarn?

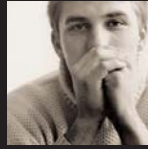
If the yarn is a single yarn, is it a blended yarn?

If yes, how were you able to determine that it was a blended yarn?

If the yarn is a ply or cord yarn, how many different yarns make up the finished yarn?



unit 3: Yarns



Is the yarn a combination yarn?

If yes, how were you able to determine that it was a combination yarn?

Yarn Components 6

How would you classify the yarn in the photo? Is it a single, ply or cord yarn?

If the yarn is a single yarn, is it a blended yarn?

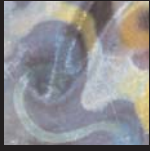
If yes, how were you able to determine that it was a blended yarn?

If the yarn is a ply or cord yarn, how many different yarns make up the finished yarn?

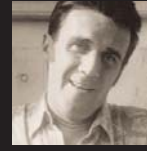
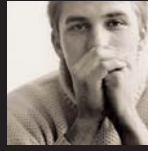
Is the yarn a combination yarn?

If yes, how were you able to determine that it was a combination yarn?

Why might a designer select a ply yarn over a single yarn?



unit 3: Yarns



Why might a designer select a single yarn over a ply yarn?

IV. Complexity of Yarns

The photos in this section illustrate the difference between simple and fancy yarns including:

- chenille yarns
- corkscrew or spiral yarns
- crepe yarns
- looped or boucle yarns
- metallic yarns
- nub yarns
- slub yarns

Yarn Complexity 1

Describe the yarn.

Would it be classified as a simple or fancy yarn?

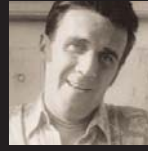
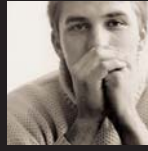
Yarn Complexity 2

Describe the yarn.

Would it be classified as a simple or fancy yarn?



unit 3: Yarns



Yarn Complexity 3

What specialty type of fancy yarn is shown in the photo?

What are the distinguishing features that enabled you to identify the specific type of fancy yarn?

Yarn Complexity 4

What specialty type of fancy yarn is shown in the photo?

What are the distinguishing features that enabled you to identify the specific type of fancy yarn?

Yarn Complexity 5

What specialty type of fancy yarn is shown in the photo?

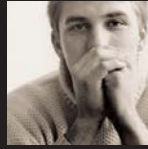
What are the distinguishing features that enabled you to identify the specific type of fancy yarn?

Yarn Complexity 6

What specialty type of fancy yarn is shown in the photo?



unit 3: Yarns



What are the distinguishing features that enabled you to identify the specific type of fancy yarn?

Yarn Complexity 7

What specialty type of fancy yarn is shown in the photo?

What are the distinguishing features that enabled you to identify the specific type of fancy yarn?

Yarn Complexity 8

What specialty type of fancy yarn is shown in the photo?

What are the distinguishing features that enabled you to identify the specific type of fancy yarn?

Describe at least two possible benefits of using fancy yarns.

Describe at least two possible disadvantages of using fancy yarns.
